

SmartLine Wireless Pressure Transmitter Flange Mounted Specification

Series 800 model:

STFW828 0 to 400 in H₂O 0 to 1,000 mbar

Series 700 Model:

STFW724 0 to 400 in H₂O 0 to 1,000 mbar

Introduction

SmartLine Wireless Pressure continues the evolution of Honeywell's wireless transmitter product offering and provides the latest critical advancements to support industrial automation users' desire to expand wireless use for monitoring and control.

With over 14 years of industrial wireless experience, the SmartLine Wireless Pressure builds upon and is compatible with the current XYR 6000 product portfolio. Similar to the XYR 6000 wireless transmitter, the SmartLine Wireless product line is part of the Honeywell OneWireless™ system and is ISA100 - ready.

SmartLine Wireless Pressure transmitters also leverage SmartLine technology in the incorporation of the enhanced SmartLine Pressure meter body. By utilizing the same meter body as in the non-wireless pressure product offering, you get best-in-class performance, reduction in spares inventory, and a lessening of the maintenance learning curve.

The SmartLine Wireless Pressure transmitter enables customers to obtain data and create information from remote and hazardous measurement locations without the need to run wires, where running wire is cost prohibitive and/or the measurement is in a hazardous location. Without wires, transmitters can be installed and operational in minutes, quickly providing information back to your system.



Figure 1 — SmartLine Wireless Flange Mounted Pressure Transmitter

The previous generation transmitters primarily were applied to monitoring applications but experienced users know that Honeywell's wireless products are as reliable, secure, and safe as their wired counterparts. With this knowledge, users are now looking for wireless transmitters for use in specific control applications.

SmartLine Wireless introduces a step change in performance and most notably, performance suitable for control. SmartLine Wireless performance is improved in these ways:

- Fast ½ second publication rate
- Built-in additional noise reduction
- More powerful 4 dBi integral antenna
- Good battery life performance even at ½ second publication rate.

SmartLine Wireless Pressure retains the following desirable features from the XYR 6000 product offering:

- Mesh or non-mesh configuration within each transmitter
- Generic, off-the-shelf lithium ion battery.
- Two “D” size batteries for longer life.
- Choice of over-the-air or local provisioning (network security join key)
- Over-the-air firmware upgrade capability
- Unique, encrypted provisioning key delivered from the factory
- Remote and integral antenna options
- 24 VDC power option
- Publication rates of 1, 5, 10, or 30 seconds, plus new selections for ½ sec, and 1, 15, 30, 60 minutes
- Transmitter range (integral antenna) of 1150’ (350 m) under ideal conditions.

The STFW800 and STFW700 series transmitters are high performance flange mounted level transmitters featuring piezoresistive sensor technology. These transmitters may be directly mounted onto a tank flange and are offered with a variety of tank connections including various flush and extended diaphragm configurations. STFW800 offers highest accuracy and stability while the STFW700 offers the best performance value. Both are applicable over a wide range of level applications.

Span & Range Limits:

Model	URL “H ₂ O (mbar)	LRL “H ₂ O (mbar)	Max Span “H ₂ O (mbar)	Min Span “H ₂ O (mbar)
STFW828	400 (1000)	-400 (-1000)	400 (1000)	4.0 (10.0)
STFW724	400 (1000)	-400 (-1000)	400 (1000)	4.0 (10.0)

SmartLine Wireless Features

Local and over-the-air provisioning capability. All Honeywell wireless devices feature a secure method to join the local wireless network, also known as provisioning. SmartLine Wireless transmitters feature two methods to provision a transmitter onto the network which are either by using a handheld device to locally communicate through the IR interface or remotely using the over-the-air function. The over-the-air function is managed by the OneWireless gateway, Wireless Device Manager (WDM).

In either method, the communication of secure, unique provisioning keys is one of the main factors to prevent against unintended access. Honeywell’s security keys are unique for each device from the factory, never made visible, always encrypted, and uniquely generated from the gateway that manages the deployed network.

Over-the-air firmware updates. Once joined as a member of your OneWireless network, the WDM can download new transmitter firmware releases to each SmartLine Wireless transmitter over the wireless network. Locating and accessing the transmitter locally is not required thus saving time and keeping your personnel in safe environments.

Mesh and non-mesh capability. All SmartLine Wireless transmitters can be configured to operate in either a mesh network or a star (non-mesh) network. The configuration is specific to each wireless transmitter and thus the network can consist of a mixture of meshing and non-meshing devices. Non-meshing is desirable for deterministic communications which is preferred for control.

Transmission power setting. To comply with local and regional requirements, SmartLine Wireless transmitters are set at the factory to the maximum transmission power setting allowed for the country of use.

Non-proprietary battery. Sourcing lithium thionyl chloride batteries is much simpler since SmartLine Wireless utilizes commercial off-the-shelf batteries. Please see the list of approved battery manufacturers later in this specification. Batteries are housed in an IS-approved battery compartment making battery changes safe and easy.

Backward compatibility. SmartLine Wireless transmitters can join existing OneWireless networks and interoperate with existing XYR 6000 wireless transmitters or other ISA100 Wireless compliant transmitters or networks.

OneWireless Network Features

The core of the Honeywell wireless solution is the OneWireless Network which consists a gateway, access point(s), and field routers.

The Wireless Device Manager (WDM) serves as the gateway function and in this role, manages the communication from the wireless field devices to the process control application. Typically, the WDM connects logically to the process control network (Level 2 or wireless DMZ). As the wireless network manager, the WDM provides easy access to the entire wireless network through a browser-based user interface. The Honeywell WDM can manage devices communicating over the ISA100 Wireless protocol and the Wireless HART™ protocol.

The ability to deploy redundant WDMs improves the reliability ensuring no loss of process data which is a requirement for control applications.

The Field Device Access Point (FDAP) serves in two roles in the OneWireless network infrastructure, which are: 1) access point, and 2) field router. As an access point, the FDAP directly connects to the WDM via Ethernet LAN cable. More than one access point is permitted and, when more than one is present, it ensures dual path for communications into the WDM from the field devices. As a field router, the FDAP located in the field would communicate to the FDAP acting as an access point. Using the FDAP as a router is more efficient than using field devices as routers since FDAPs are line powered devices whereas field devices are typically battery powered, and the FDAP offers greater range. The meshing capability of FDAPs allows flexibility in the setup of the wireless network to fit the requirements for wireless network performance, in terms of reliable communications, performance, and future growth.

The choice of non-meshing network may be desirable for decreased communication latency which a FDAP serving as a field router helps ensures.

Wireless Specifications

Parameter	Description
Wireless Communication	2,400 to 2,483.5 MHz (2.4 GHz) Industrial, Scientific and Medical (ISM) band DSSS - Direct Sequential Spread Spectrum per FCC 15.247 / IEEE 802.15.4 2006 Every data packet transmitted in either direction is verified (CRC check) and acknowledged by the receiving device. USA – FCC Certified Canada – IC Certified European Union – Radio Equipment Directive compliant
DSSS RF Transmitter Power	NA Selection –100 mW (20.0 dBm) maximum EIRP including antenna for USA and Canadian locations. EU Selection – 63 mW (18.0 dBm) maximum EIRP including antenna per RTTE/ETSI for EU locations. Compliant to ETSI EN 300 328 wireless standard
Data	PV Publish Cycle Time: Configurable as 0.5, 1, 5, 10, 30 seconds, plus 1, 15, 30, 60 minutes Rate: 250 Kbps
Antennas	Integral – 4 dBi omnidirectional monopole (default selection) Remote – 8 dBi omnidirectional monopole with up to two 10 m cables and lightning surge arrester Remote – 14 dBi directional parabolic with up to two 10 m cables and lightning surge arrester.
Signal Range	Nominal 350 m (1150 feet) between Field Transmitter and Infrastructure Unit (FDAP) when using 4 dBi Integral antenna with a clear line of sight*

*Actual range will vary depending on antennas, cables and site topography.

Specifications

Operating Conditions – All Models

Parameter	Reference Condition (at zero static)		Rated Condition		Operative Limits		Transportation and Storage	
	°C	°F	°C	°F	°C	°F	°C	°F
Ambient Temperature^{1,4}	25 ±1	77 ±2	-40 to 85	-40 to 185	-40 to 85	-40 to 185	-55 to 120	-67 to 248
Ambient Temperature LCD Display visible range	25 ±1	77 ±2	-40 to 85	-40 to 185				
Meter Body Temperature²	25 ±1	77 ±2	-40 to 110 ¹	-40 to 230 ¹	-40 to 125	-40 to 257	-55 to 120	-67 to 248
Humidity %RH	10 to 55		0 to 100		0 to 100		0 to 100	
Minimum Pressure mmHg absolute in H₂O absolute	Atmospheric Atmospheric		25 13		2 (short term ³) 1 (short term ³)			
Vibration	Maximum of 4g over 15 to 200Hz.							
Shock	Maximum of 40g.							
Power	<p>Commercially available, non-proprietary 3.6V Lithium thionyl chloride (LiSOCl₂) batteries, non-rechargeable, size D. Battery pack-only option is available. Approved list of the manufacturer models:</p> <ol style="list-style-type: none"> 1. Xeno Energy XL-205F 2. Eagle Picher PT-2300H 3. Tadiran TL-5930/s <p>24 VDC power option. For Non I.S. application: 16 to 28 VDC Input range, max input current 100mA. For I.S. application: Barrier in accordance with the control drawing required, Entity parameters 30V, 120mA, 0.9W</p>							

¹ NEOBEE M-20 minimum temperature is -15°C (5°F). NEOBEE is a registered trademark of Stepan Company.

² For CTFE fill fluid, the maximum temperature rating is 150°C (300°F).

³ Short term equals 2 hours at 70°C (158°F)

⁴ The Ambient Limits shown are for Ordinary Non-Hazardous locations only. Refer to the Hazardous Locations Approvals section for the Ambient Limits when installed in Hazardous Locations.

Maximum Allowable Working Pressure (MAWP)^{6,7}

(STWX800 and STWX700 products are rated to Maximum Allowable Working Pressure. MAWP depends on Approval Agency and transmitter materials of construction.)

STFW828	Flange Material	Ambient Temperature -29 to 38°C [-20 to 100°F]	Max Meterbody Temperature 125°C [257°F]	Process Interface Temperature 175°C [350°F]
ANSI Class 150 psi [bar]	304 S.S. 316 S.S.	275 [19.0] 275 [19.0]	218 [15.0] 225 [15.5]	198 [13.7] 205 [14.1]
ANSI Class 300 psi [bar]	304 S.S. 316 S.S.	720 [49.6] 720 [49.6]	570 [39.3] 590 [40.7]	518 [35.7] 538 [37.1]
DN PN40 psi [bar]	304 S.S. 316 S.S.	534 [36.8] ⁵ 534 [36.8] ⁵	419 [28.9] 434 [29.9]	385 [26.5] 399 [27.5]

STFW724	Flange Material	Ambient Temperature -29 to 38°C [-20 to 100°F]	Max Meterbody Temperature 125°C [257°F]	Process Interface Temperature 175°C [350°F]
ANSI Class 150 psi [bar]	304 S.S. 316 S.S.	275 [19.0] 275 [19.0]	218 [15.0] 225 [15.5]	198 [13.7] 205 [14.1]
ANSI Class 300 psi [bar]	304 S.S. 316 S.S.	720 [49.6] 720 [49.6]	570 [39.3] 590 [40.7]	518 [35.7] 538 [37.1]
DN PN40 psi [bar]	304 S.S. 316 S.S.	534 [36.8] ⁵ 534 [36.8] ⁵	419 [28.9] 434 [29.9]	385 [26.5] 399 [27.5]

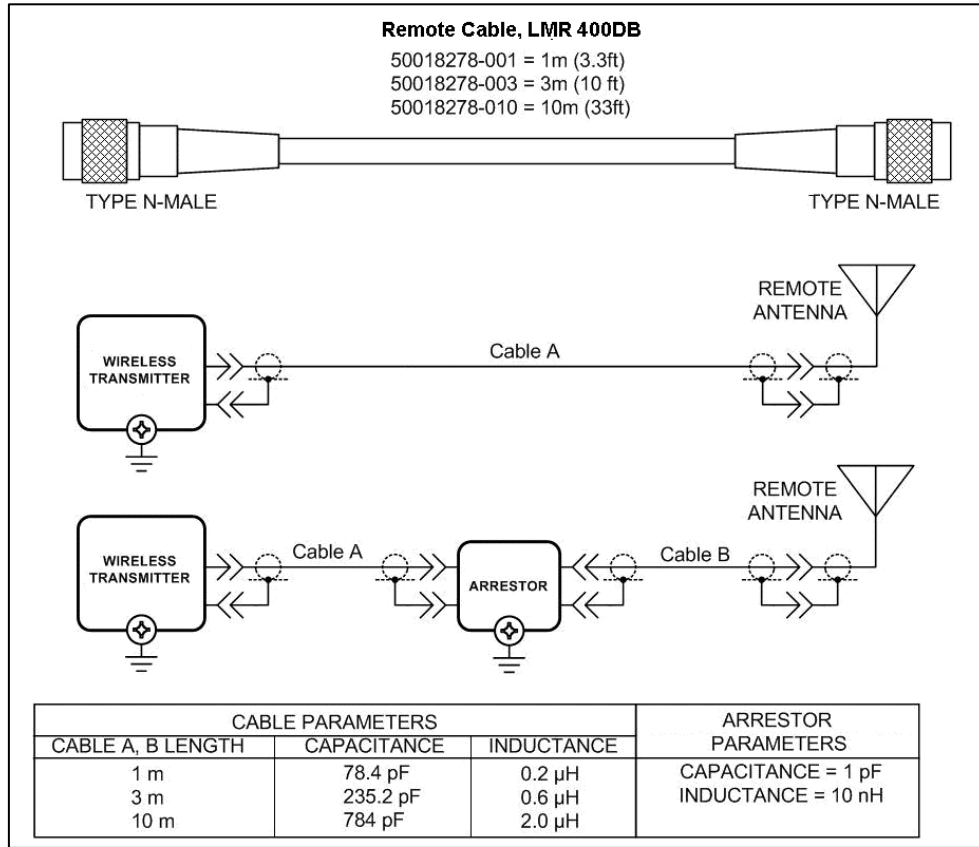
⁵ Ambient Temperature for DN PN40 is -10 to 50°C [14 to 122 F]

⁶ MAWP applies for temperature range -40 to 125°C. However, Static Pressure Limit is de-rated to 3,000 psi from -26°C to -40°C.

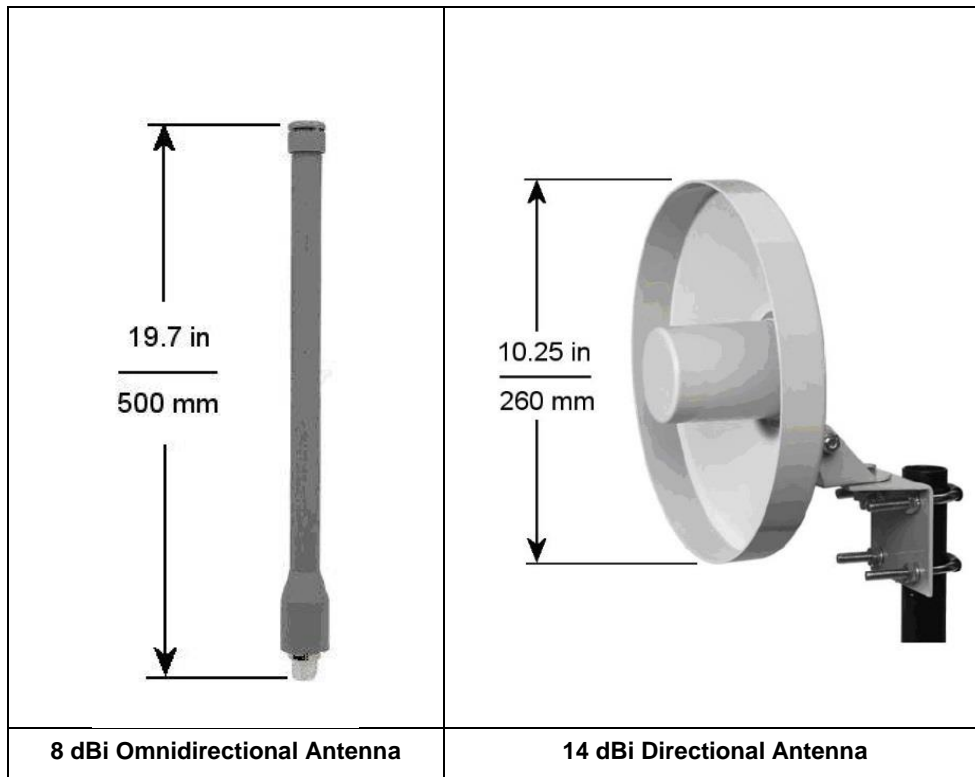
Use of graphite o-rings de-rates transmitter to 3,625 psi. Use of adaptor with graphite o-rings de-rates transmitter to 3,000 psi.

⁷ Consult factory for MAWP of ST 800 and ST 700 transmitters with CSA approval.

Remote Antenna Cables



Remote Antennas



Performance Specifications

Performance under Rated Conditions* - Model STFW828 (400 in H₂O)

Parameter	Description
Upper Range Limit in H ₂ O mbar	400 (39.2°F/4°C is standard reference temperature for in H ₂ O range.) 1,000
Lower Range Limit in H ₂ O mbar	-400 (39.2°F/4°C is standard reference temperature for in H ₂ O range.) -1,000
Minimum Span in H ₂ O mbar (Span can be between -400 to +400 inH ₂ O / -1000 to +1000 mbar)	4 10
Maximum Span in H ₂ O mbar (400 inH ₂ O / 1000mbar (span can be between -400 to +400 inH ₂ O))	400 1000
Zero Elevation and Suppression	No limit except min. span within ±100% URL. Specifications valid from -5 to +100% URL.
Accuracy (Reference – Includes combined effects of linearity, hysteresis, and repeatability) • Accuracy includes residual error after averaging successive readings.	±0.075% of calibrated span or upper range value (URV), whichever is greater, terminal based. For URV below reference point (25 in H ₂ O), accuracy equals: $\pm \left[0.025 + 0.05 \left(\frac{25 \text{ inH}_2\text{O}}{\text{span inH}_2\text{O}} \right) \right] \text{ or } \pm \left[0.025 + 0.05 \left(\frac{62.5 \text{ mbar}}{\text{span mbar}} \right) \right] \text{ in \% of span}$
Zero Temperature Effect per 28°C (50°F)	±0.20% of span. For URV below reference point (50 in H ₂ O), effect equals: $\pm 0.20 \left(\frac{50 \text{ inH}_2\text{O}}{\text{span inH}_2\text{O}} \right) \text{ or } \pm 0.20 \left(\frac{125 \text{ mbar}}{\text{span mbar}} \right) \text{ in \% of span}$
Combined Zero and Span Temperature Effect per 28°C (50°F)	±0.375% of span. For URV below reference point (50 in H ₂ O), effect equals: $\pm \left[0.175 + 0.20 \left(\frac{50 \text{ inH}_2\text{O}}{\text{span inH}_2\text{O}} \right) \right] \text{ or } \pm \left[0.175 + 0.20 \left(\frac{125 \text{ mbar}}{\text{span mbar}} \right) \right] \text{ in \% of span}$
Zero Static Pressure Effect per 300 psi (20 bar)	±0.1625% of span. For URV below reference point (50 in H ₂ O), effect equals: $\pm \left[0.0125 + 0.15 \left(\frac{50 \text{ inH}_2\text{O}}{\text{span inH}_2\text{O}} \right) \right] \text{ or } \pm \left[0.0125 + 0.15 \left(\frac{125 \text{ mbar}}{\text{span mbar}} \right) \right] \text{ in \% of span}$
Combined Zero and Span Static Pressure Effect per 300 psi (20 bar)	±0.30% of span. For URV below reference point (50 in H ₂ O), effect equals: $\pm \left[0.15 + 0.15 \left(\frac{50 \text{ inH}_2\text{O}}{\text{span inH}_2\text{O}} \right) \right] \text{ or } \pm \left[0.15 + 0.15 \left(\frac{125 \text{ mbar}}{\text{span mbar}} \right) \right] \text{ in \% of span}$

* Performance specifications are based on reference conditions of 25°C (77°F), zero (0) static pressure, 10 to 55% RH, and 316 Stainless Steel barrier diaphragm.

Performance Under Rated Conditions* - Model STFW724 (0 to 400 inH₂O/1,000 mbar)

Parameter	Description
Upper Range Limit inH ₂ O mbar	400 (39.2°F/4°C is standard reference temperature for inH ₂ O range.) 1,000
Minimum Span inH ₂ O mbar	10 25
Zero Elevation and Suppression	No limit except minimum span within ±100% URL. Specifications valid from –100% to + 100% URL.
Accuracy (Reference – Includes combined effects of linearity, hysteresis, and repeatability) • Accuracy includes residual error after averaging successive readings.	±0.075% of calibrated span or upper range value (URV), whichever is greater, terminal based. For URV below reference point (25 inH ₂ O), accuracy equals: $\pm \left[0.025 + 0.05 \left(\frac{25 \text{ inH}_2\text{O}}{\text{span inH}_2\text{O}} \right) \right] \text{ or } \pm \left[0.025 + 0.05 \left(\frac{62.5 \text{ mbar}}{\text{span mbar}} \right) \right] \text{ in \% of span}$
Zero Temperature Effect per 28°C (50°F)	±0.30% of span. For span below reference point (50 inH ₂ O), effect equals: $\pm 0.30 \left(\frac{50 \text{ inH}_2\text{O}}{\text{span inH}_2\text{O}} \right) \text{ or } \pm 0.30 \left(\frac{125 \text{ mbar}}{\text{span mbar}} \right) \text{ in \% of span}$
Combined Zero and Span Temperature Effect per 28°C (50°F)	±0.475% of span. For span below reference point (50 inH ₂ O), effect equals: $\pm \left[0.225 + 0.25 \left(\frac{50 \text{ inH}_2\text{O}}{\text{span inH}_2\text{O}} \right) \right] \text{ or } \pm \left[0.225 + 0.25 \left(\frac{125 \text{ mbar}}{\text{span mbar}} \right) \right] \text{ in \% of span}$
Zero Static Pressure Effect per 300 psi (20 bar)	±0.2125% of span. For URV below reference point (50 inH ₂ O), effect equals: $\pm \left[0.0125 + 0.20 \left(\frac{50 \text{ inH}_2\text{O}}{\text{span inH}_2\text{O}} \right) \right] \text{ or } \pm \left[0.0125 + 0.20 \left(\frac{125 \text{ mbar}}{\text{span mbar}} \right) \right] \text{ in \% of span}$
Combined Zero and Span Static Pressure Effect per 300 psi (20 bar)	±0.40% of span. For URV below reference point (50 inH ₂ O), effect equals: $\pm \left[0.20 + 0.20 \left(\frac{50 \text{ inH}_2\text{O}}{\text{span inH}_2\text{O}} \right) \right] \text{ or } \pm \left[0.20 + 0.20 \left(\frac{125 \text{ mbar}}{\text{span mbar}} \right) \right] \text{ in \% of span}$

* Performance specifications are based on reference conditions of 25°C (77°F), zero (0) static pressure, 10 to 55% RH, and 316L Stainless Steel barrier diaphragm.

Performance Under Rated Conditions – All Models

Parameter	Description
Electromagnetic Compatibility	IEC 61326-1
Lightning Surge Arrester (Remote antenna only)	Frequency range: 0 – 3 GHz, 50 Ohms, VSWR = 1:1.3 Max, Insertion Loss = 0.4 dB Connectors Type N Female, Max, Gas Tube Element: 90 V ± 20%, Impulse Breakdown Voltage = 1,000 V ± 20%, Maximum Withstand Current = 5 KA.
CE Conformity	These transmitters are in conformity with the Radio Equipment Directive, ETSI EN 300 328 V2.1.1 including EMC standard EN61326-1 2013

Physical Specifications

Parameter	Description
Mounting Bracket	Carbon Steel (zinc-plated) or Stainless Steel angle bracket or flat bracket available.
Electronic Housing	Epoxy-Polyester hybrid paint. Low Copper-Aluminum with 1/2" NPT or M20 conduit connections. Meets NEMA 4X (hosedown and corrosion resistant), IP 66/67 (hosedown and submersible to 1 meter).
Stainless Steel Housing (option)	316 SS or Grade CF8M, the casting equivalent of 316 SS with M20 or 1/2" NPT conduit connections. If ordered with the Remote Antenna options, the antenna parts are not SS or Marine type cables; the integral antenna uses SS parts.
Process Connections	Process Head: 1/4-inch NPT; 1/2-inch NPT with adapter. Process heads meet DIN 19213 requirements. Flange: 2, 3 or 4-inch Class 150 or 300 ANSI; DN50-PN40, DN80-PN40 or DN100-PN40 DIN flange. Extended Diaphragm: 2, 4 or 6 inches (50, 101, 152 mm) long. 2 or 3-inch, Class 150 ANSI flange.
Mounting	Can be mounted in virtually any position using the standard mounting bracket. Mounting should result in the antenna being vertically oriented. Bracket is designed to mount on 2-inch (50 mm) vertical or horizontal pipe. See Figure 2 .
Dimensions	See Figure 3 and Figure 4 .
Net Weight	23 to 36 lbs (10.5 kg to 16.4 kg) depending on flange size ¹

¹ Add 8.0 pounds (3.6 kg) to any model equipped with stainless steel housing option (Model Selection Guide Table IV selection M or N)

Materials Specifications

(see model selection guide for availability/restrictions with various models)

Parameter	Description
Barrier Diaphragm Material	316L SS and Hastelloy [®] C-276 ²
Process Head Material	316 SS ³
Vent/Drain Valves & Plugs ¹	316 SS ³
Head Gaskets	Glass-filled PTFE standard. (STFW828 optionally available with Viton [®])
Meter Body Bolting	Carbon Steel (zinc plated) standard. Options include 316 SS and NACE A286 SS bolts
Fill Fluid	Silicone DC 200 oil, NEOBEE M-20, or CTFE (chlorotrifluoroethylene)
Mounting Flange ⁴	
Flush	316L SS and Hastelloy C-276 ² .
Extended	316L SS

¹ Vent/Drains are sealed with Teflon[®]

² Hastelloy C-276 or UNS N10276

³ Supplied as 316 SS or as Grade CF8M, the casting equivalent of 316 SS.

⁴ Mounting flange is process wetted.

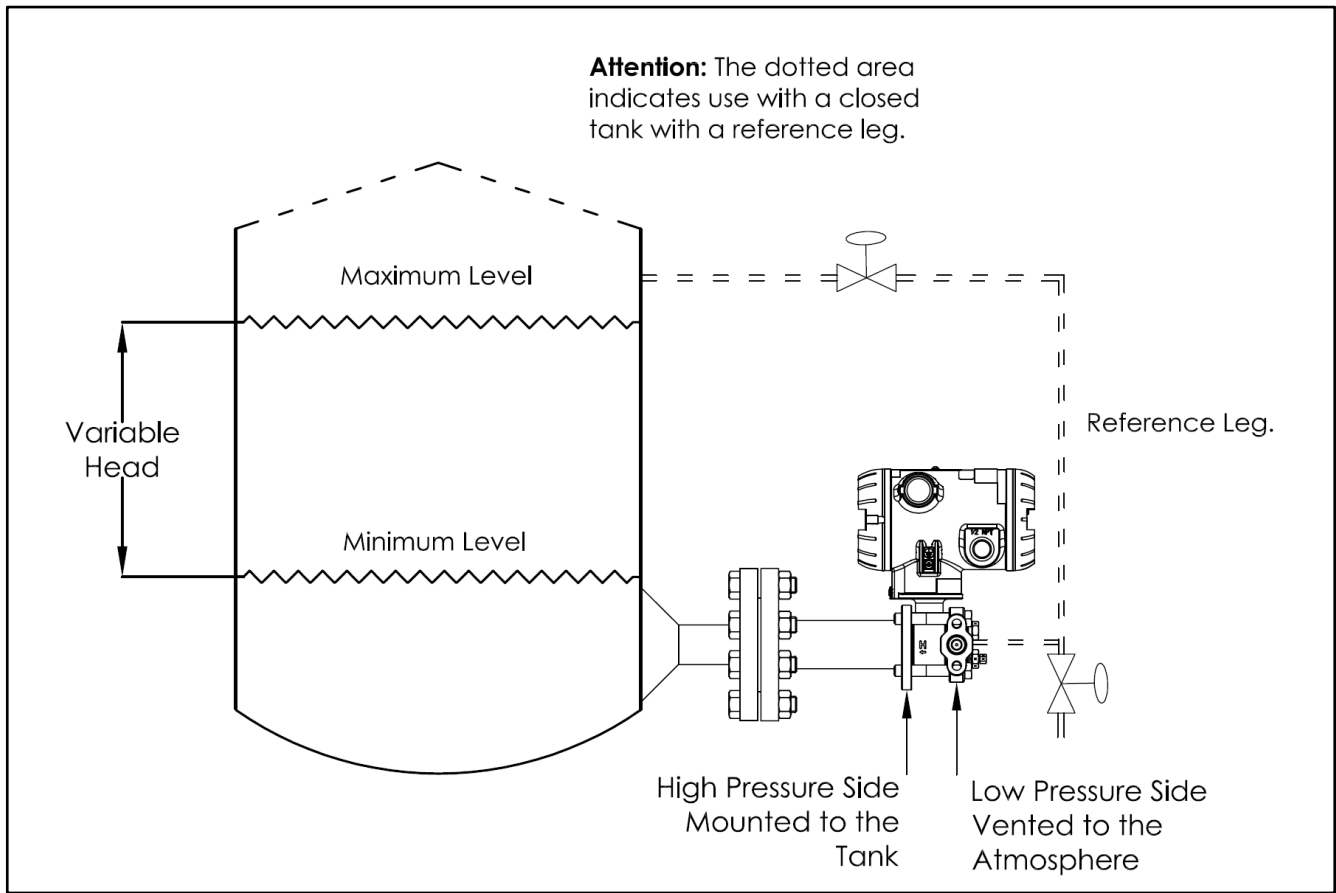


Figure 2 — Typical mounting arrangement for flange mounted liquid level transmitter (antenna omitted)

Mounting and Dimensions

Reference Dimensions: $\frac{\text{millimeters}}{\text{inches}}$

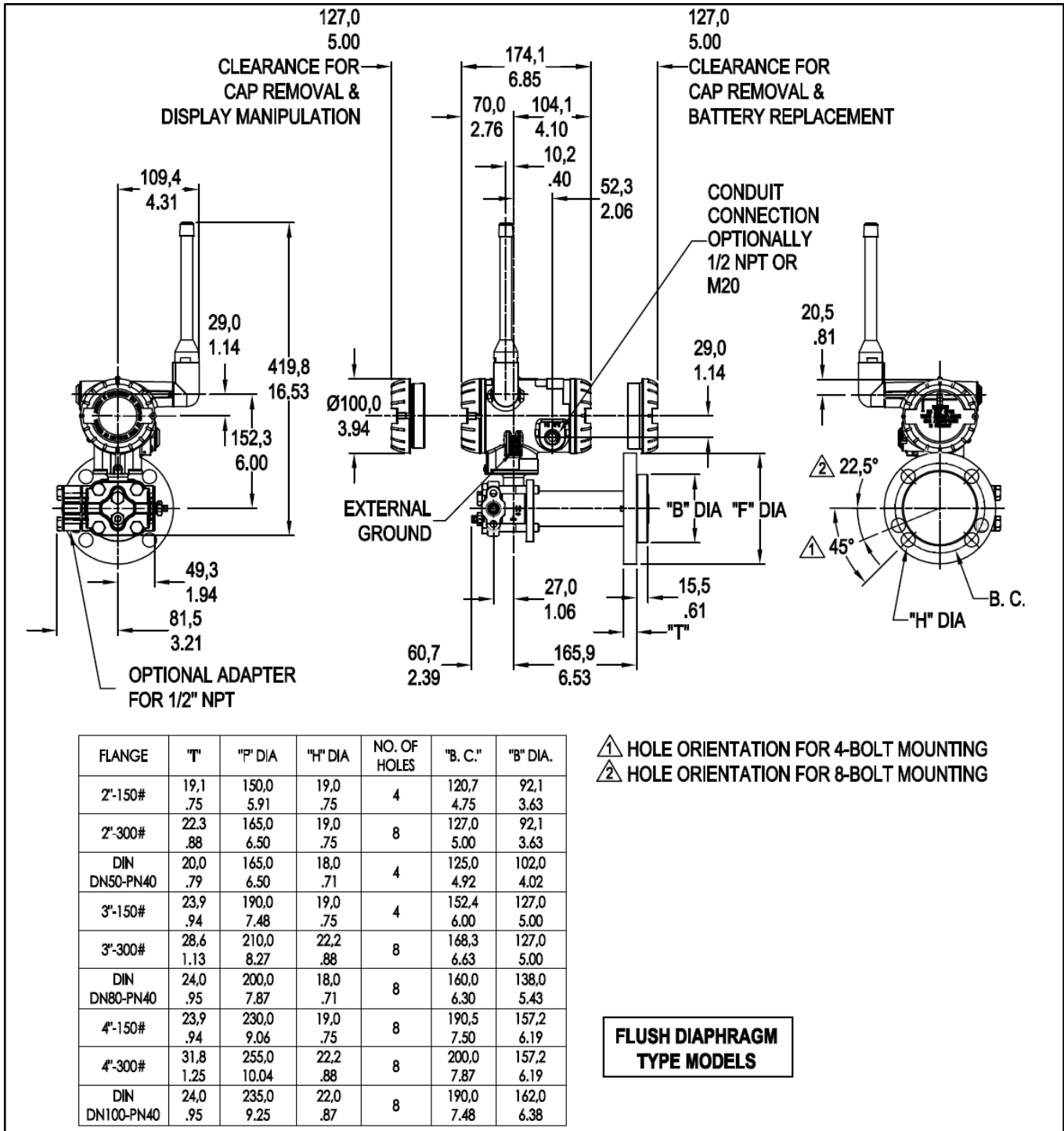


Figure 3 – Typical mounting dimensions for flush diaphragm type models STFW828 and STFW724

Reference Dimensions: millimeters
inches

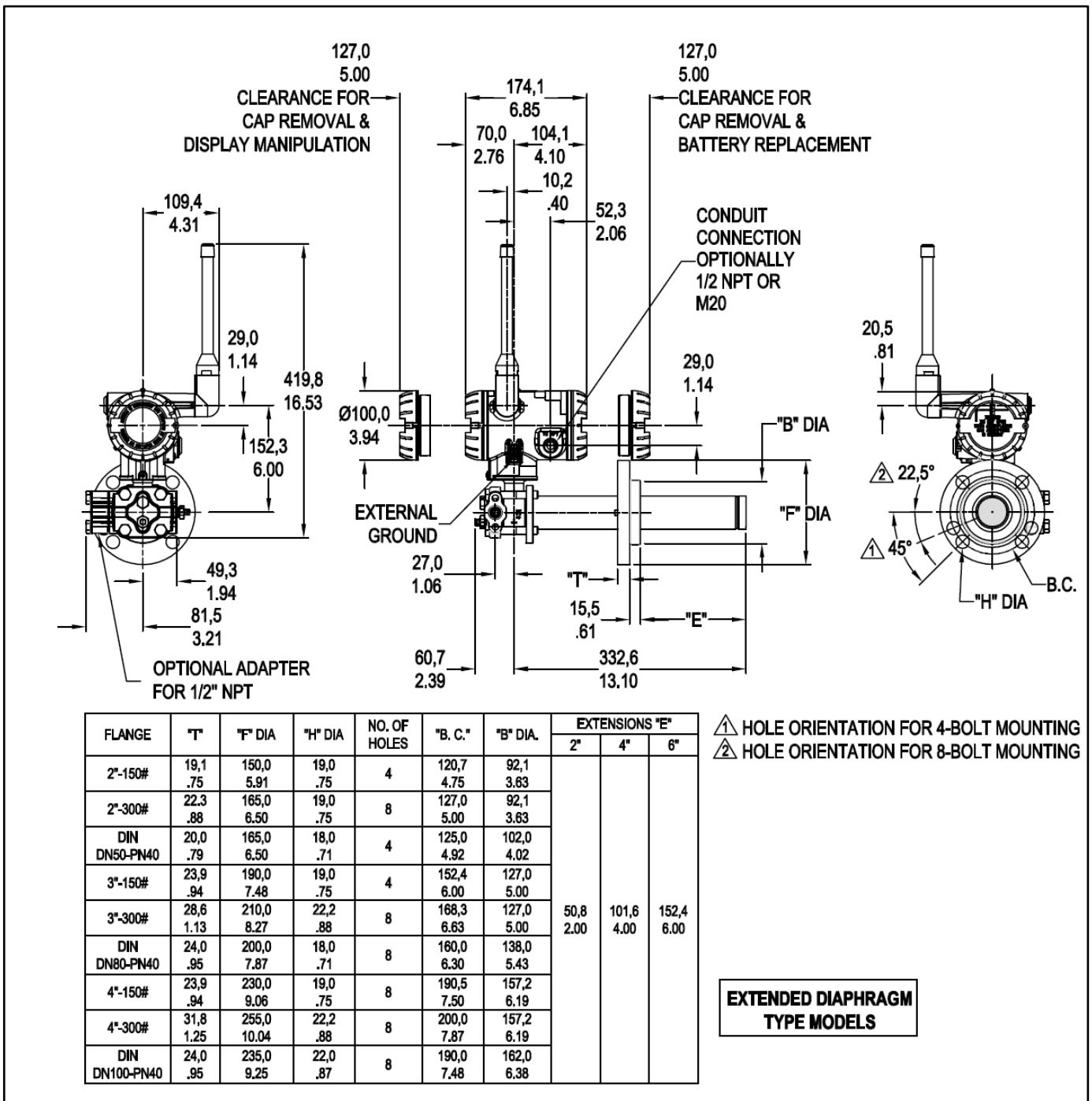


Figure 4 — Typical mounting dimensions for extended diaphragm type models STFW828 and STFW724

Hazardous Locations Approvals

Refer to control drawing 50136123, in the User's manual #34-SW-25-01, for intrinsically safe installation details

AGENCY	TYPE OF PROTECTION	Ambient Temperature	Product Applicability
CSA (USA and Canada)	Intrinsically Safe: Class I; Division 1; Groups A, B, C, D; Class II, Division 1, Groups E, F, G; Class III, Division 1; T4 Class I, Zone 0 AEx ia IIC T4 Ga Class I Zone 2 AEx ic IIC T4 Gc Ex ia IIC T4 Ga Ex ic IIC T4 Gc	See tables below	Pressure
	Nonincendive: Class I; Division 2; Groups A, B, C, D; Class II, Division 2, Groups E, F, G; Class III, Division 2, T6...T4 Ex nA [ia] IIC T6...T4 Gc [Ga] Class I, Zn 2[0], AEx nA[ia] IIC T6...T4 Gc[Ga]	See tables below	Pressure
	Explosion-Proof/ Flameproof/Dust Proof: Class I, Division 1; Groups A, B, C, D; Class II, Division 1, Groups E, F, G; Class III, Division 1; T6...T4 Ex db [ia] IIC T6...T4 Gb[Ga] Ex tb [ia] IIIC T95...T125 Db[Da] Class I, Zn 1[0] AEx db [ia] IIC T6...T4 Gb[Ga] Class II, Zn 21, AEx tb[ia] IIIC T95...T125 Db[Da]	See tables below	Pressure
	Enclosure: Type 4X/ IP66/ IP67		

AGENCY	TYPE OF PROTECTION	Ambient Temperature	Product Applicability
FM ApprovalsTM (USA)	Intrinsically Safe: IS Class I, II, III; Division 1; Groups ABCDEFG; T4 Class I, Zone 0 AEx ia IIC Ga T4 Class I, Zone 2[0] AEx ic [ia Ga] IIC Gc T4	-40 °C to +85 °C	Pressure
	Nonincendive: NI-AIS Class I; DIV 2; Groups ABCD; T5...T6 Class I, Zone 2[0] AEx nA [ia Ga] IIC Gc; T5...T6	-40 °C to +85 °C : T5 -40 °C to +70 °C : T6	Pressure
	Dust Proof: DIP-AIS Class II, III DIV 1; Groups EFG; T5...T6 Zone 21[20] AEx tb [ia Da] IIIC T95°C Db	-40 °C to +85 °C : T5, T95 -40 °C to +70 °C : T6	Pressure
	Enclosure: Type 4X/ IP66/ IP67		
Standards Used:			
FM 3600:2018	FM 3610: 2018	FM 3611: 2018	
ANSI/ISA 60079-0: 2013	FM 3810: 2018	FM 3616: 2011	
ANSI/ ISA 60079-15: 2013	ANSI/ ISA 60079-31: 2015	ANSI/ ISA 60079-11: 2014	
ANSI/ NEMA 250: 2008		ANSI/ ISA 60529: 2004	

AGENCY	TYPE OF PROTECTION	Ambient Temperature	Product Applicability
ATEX	Intrinsically Safe: II 1 G Ex ia IIC T4 Ga II 3 G Ex ic IIC T4 Gc	See tables below	Pressure
	Flameproof / Dust Proof: II 2[1] G Ex d [ia] IIC T6...T4 Gb [Ga] II 2[1] D Ex tb [ia] IIIC T95C...T125C Db [Da]	See tables below	Pressure
	Nonincendive: II 3[1] G Ex ec [ia] IIC T6...T4 Gc [Ga]	See tables below	Pressure
	Enclosure: IP66/ IP67		
	Standards Used: EN 60079-0 : 2012 + A1 EN 60079-26 : 2006 EN 60529 : 2001 + A1	EN 60079-1 : 2014 EN 60079-7 : 2015	EN 60079-11 : 2012 EN 60079-31 : 2009

AGENCY	TYPE OF PROTECTION	Ambient Temperature	Product Applicability*
IECEx	Intrinsically Safe: Ex ia IIC T4 Ga Ex ic IIC T4 Gc	See tables below	Pressure
	Flameproof / Dust Proof: Ex db [ia] IIC T6...T4 Gb[Ga] Ex tb [ia] IIIC Db[Da] T95C...T125C	See tables below	Pressure
	Nonincendive: Ex ec [ia] IIC T6..T4	See tables below	Pressure
	Enclosure: IP66 /IP67		
	Standards Used: IEC 60079-0 : 2011 IEC 60079-26 : 2006 IEC 60529 : 2009 cor.3	IEC 60079-1 : 2014 IEC 60079- : 2015	IEC 60079-11 : 2011 IEC 60079-31 : 2008

For Intrinsic Safety Installations:

The applicable temperature class, ambient temperature (Ta) and process temperature (Tp) range of the equipment when installed with type protection "Ex ia" is as follows:

Protection Type	Temperature Class	
	T4	
Ex ia	Ta = -40 to 80°C Tp = -40 to 125°C	
Ex ic	Ta = -40 to 85°C Tp = -40 to 125°C	

For Flameproof, Dustproof, Increased Safety, and Nonincendive Installations:

The applicable temperature class, ambient temperature (Ta) and process temperature (Tp) range of the equipment when installed with type protection "Ex db", "Ex ec", "Ex nA" is as follows:

Protection Type	Temperature Class		
	T4	T5	T6
Ex db Ex ec Ex nA	Ta = -40 to 85°C Tp = -40 to 125°C	Ta = -40 to 85°C Tp = -40 to 95°C	Ta = -40 to 75°C Tp = -40 to 80°C

The applicable temperature class, ambient temperature (Ta) and process temperature (Tp) range of the equipment when installed with type protection "Ex tb" is as follows:

Protection Type	Temperature Class	
	T125C	T95C
Ex tb	Ta = -40 to 85°C Tp = -40 to 125°C	Ta = -40 to 85°C Tp = -40 to 95°C

Transmitter Options **(indicated selection code is shown)**

ISA100 Wireless Release Selections (A or B)

OneWireless R2xx represents the previous releases whereas R3xx is the current release. A OneWireless system with R3xx firmware can host R2xx and R3xx devices. Please select the option to match the targeted OneWireless system.

Remote Antenna and Cables (M or D)

The user can select one of the optional remote antennas listed. The selection of the antenna option automatically includes the remote antenna adapter.

To complete the option selection, one of the remote antenna cables (1, 2, or 3) must also be selected.

Lightning (Surge) Diverter and Cables (1, 2, or 3)

The lightning surge diverter options includes the surge diverter and cable. The diverter features Type N connections (female) on both ends. The remote antenna adapter is not included.

Remote Antenna Adapter (A)

This option provides an adapter to be inserted into the opening where the integral antenna normally connects. The adapter is designed to connect to a remote antenna that the user supplies. It features a female Type N connection.

Standard Diagnostics plus Anti-Alias Filter (3)

This option enables the Anti-Alias filter option which attenuates the higher frequencies and helps to prevent aliasing components from being sampled.

Destination Country (CA, EU, or US)

This selection sets the transmission power at the factory to comply with the installation country location.

Custom Configuration (C)

Customer specified configuration parameters are programmed into the transmitter at the factory. Configuration information needs to be communicated to Honeywell Order Management at time of order entry.

Additionally, the Honeywell OneWireless user interface is accessible through any browser and thus all configurable parameters are visible and can be edited.

Custom Calibration (B)

Custom calibration would input customer specified LRV and URV values, and check linearity. LRV and URV information needs to be communicated to Honeywell Order Management at time of order entry.

Mounting Brackets (1, 3, 5, or 7)

The angle mounting bracket is available in either zinc-plated carbon steel or 316 stainless steel and is suitable for horizontal or vertical mounting on a two-inch (50 millimeter) pipe, as well as wall mounting.

An additional flat mounting bracket is also available in carbon steel and 316 stainless steel for two-inch (50 millimeter) pipe mounting.

Tagging (Option 1 or 2)

The choice of 1 or 2 stainless steel wired-on tags is available. Each tag can accommodate additional data of up to 4 lines of 28 characters. The number of characters includes spaces.

Note that the standard nameplate on the meter body contains the serial number and body-related data.

Model Selection Guide for STFW800

Model Selection Guides are subject to change and are inserted into the specifications as guidance only

**Model STFW800
Flange Mounted Liquid Level
Wireless Transmitter**

Model Selection Guide
34-SW-16-33 Issue 1

Instructions

- Select the desired Key Number. The arrow to the right marks the selection available.
- Make one selection from each Table (I, II and IX) using the column below the proper arrow.
- A(●) denotes unrestricted availability. Aletter denotes restricted availability.
- Restrictions follow Table IX.

Key	I	II	III	IV	V	VI	VII	VIII	IX
STFW	-	-	-	-	-	-	-	-	00000

KEY NUMBER	URL	LRL	Max Span	Min Span	Units	Selection	Availability
Measurement Range Std Accuracy	400 (1000)	-400 (-1000)	400 (1000)	4 (10)	" H ₂ O (mbar)	STFW828	

TABLE I	Materials of Construction	Design	Ref. Head	Vent Drain Valve on Ref. Head ²	Barrier Diaphragm. (wetted)	Diaphragm. Plate (wetted)	Extension (wetted)	Selection	Availability
Meter Body & Flange Design	a. Process Wetted Heads & Diaphragm Materials	Flush	316 SS ⁵	316 SS	316L SS Hast C ³ Hast C ³	316L SS 316L SS Hast C ³	N/A	E X F	● ● ●
		Extended	316 SS ⁵	316 SS	316L SS Hast C ³	316L SS	316L SS	R S	● ●
	b. Fill Fluid (Meter Body & Flange)	Silicone Oil 200						_ 1 _ _ _	●
		Fluorinated Oil CTFE						_ 2 _ _ _	●
		NEOBEE® M-20						_ 4 _ _ _	●
	c. Process Connection	Reference Head			Flange			Selection	Availability
		1/4 NPT			High Pressure Side			_ A _ _ _	●
		1/2 NPT Adapter - material matches head material and head bolt material ¹¹			Low Pressure Side			_ C _ _ _	
					High Pressure Side			_ H _ _ _	●
	Low Pressure Side			_ K _ _ _					
	d. Bolts for Process Heads	Carbon Steel Bolts						_ _ _ C _ _	●
		316 SS Bolts						_ _ _ S _ _	●
		A286 SS (NACE) Bolts						_ _ _ N _ _	●
	e. Vent/Drain Type/Location	Ref. Head Type	Vent Type	Location	Vent Material		Selection	Availability	
		Single Ended	None	None	None		_ _ _ 1 _	●	
Single Ended		Std	Side	Matches Head Material ¹¹		_ _ _ 2 _	●		
Single Ended		Ctr Vent	Side	Stainless Steel Only		_ _ _ 3 _	●		
Dual Ended		Std	End	Matches Head Material ¹¹		_ _ _ 4 _	●		
Dual Ended		Ctr Vent	End	Stainless Steel Only		_ _ _ 5 _	●		
Dual Ended	Vent/Plug	Side/End	Matches Head Material ¹¹		_ _ _ 6 _	●			
f. Gasket Material	Teflon® or PTFE (Glass Filled)						_ _ _ _ A	●	
	Viton® or Fluorocarbon Elastomer						_ _ _ _ B	●	

¹ Carbon Steel heads are zinc-plated and not recommended for water service due to hydrogen migration. For that service, use the 316 stainless steel Wetted Reference Head.
² Vent/Drains are Teflon or PTFE coated for lubricity.
³ Hastelloy® C-276 or UNS N10276
⁴ Monel 400® or UNS N04400
⁵ Supplied as 316 SS or as Grade CF8M, the casting equivalent of 316 SS.
⁶ Supplied as indicated or as Grade CW12MW, the casting equivalent of Hastelloy® C-276
⁷ Supplied as indicated or as Grade M30C, the casting equivalent of Monel 400®
¹⁰ Monel 400® or UNS N04400 or UNS N04405
¹¹ Except Carbon Steel Heads shall use 316SS Vent/Drain, Plugs & Adapters w hen required

STFW8xx Availability

TABLE II			Flange Material	Threaded Nut Ring Material	Selection	28
Flange Assembly	a. Flange (ANSI Flanges have 125-500 AARH Surface Finish)	3" ANSI Class 150	304 SS (non-wetted)	304 SS (non-wetted)	A__	•
		3" ANSI Class 300			B__	•
		DN80-PN40 DIN			C__	•
		4" ANSI Class 150			D__	•
		4" ANSI Class 300			E__	•
		DN100-PN40 DIN			F__	•
	b. Gasket Ring (wetted)	2" ANSI Class 150	316 SS (non-wetted)	304 SS (non-wetted)	Q__	•
		2" ANSI Class 300			U__	•
		DN50-PN40 DIN			V__	•
		3" ANSI Class 150			H__	•
		3" ANSI Class 300			J__	•
		DN80-PN40 DIN			K__	•
c. Extension (wetted)	4" ANSI Class 150	316 SS (non-wetted)	304 SS (non-wetted)	L__	•	
	4" ANSI Class 300			M__	•	
	DN100-PN40 DIN			N__	•	
b. Gasket Ring (wetted)	2" ANSI Class 150	316 SS (non-wetted)	304 SS (non-wetted)	W__	•	
	2" ANSI Class 300			X__	•	
	DN50-PN40 DIN			Z__	•	
	Flush Design			316L SS Hastelloy® C ³ Monel 400® ⁴	_ 1 _	s
	Extended Design			316L SS	_ 2 _	s
					_ 3 _	q
c. Extension (wetted)	Flush			_ 5 _	v	
				_ F _	w	
		Diameter	Length	Selection	Availability	
		1.87 Inches (for 2", 3" or 4" spud) ¹³	2 inches 4 inches 6 inches	_ C _ _ D _ _ E _	v v v	

³ Hastelloy® C-276 or UNS N10276

⁴ Monel 400® or UNS N04400

¹³ For part numbers and pricing information on Tank Spuds refer to page ST-91 (Supplementary Accessories & Kits).

TABLE III	Agency Approvals (see data sheet for Approval Code Details)	Selection	Availability
Approvals	No Approvals Required	0	•
	ATEX and IEC Ex Explosion proof, Intrinsically Safe, Non-incendive & Dustproof	A	•
	c CSA US Explosion proof, Intrinsically Safe, Non-incendive, & Dustproof	B	•
	FM Intrinsically Safe, Non-incendive and Dustproof	H	•

TABLE IV	TRANSMITTER ELECTRONICS SELECTIONS				
	Material	Connection	Paint Color	Selection	Availability
a. Electronic Housing Material & Connection Type	Epoxy Polyester Hybrid Coated Aluminum	1/2 NPT	Standard (Blue / Gray)	C_____	•
	Epoxy Polyester Hybrid Coated Aluminum	M20	Standard (Blue / Gray)	D_____	•
	316 Stainless Steel (Grade CF8M)	1/2 NPT	Standard (no paint)	M_____	•
	316 Stainless Steel (Grade CF8M)	M20	Standard (no paint)	N_____	•
b. Output Protocol	Wireless Protocol				
	ISA100 Wireless 2.0 compatible (equivalent OW R300 or newer)			_ A _____	•
c. Power	ISA100 Wireless 1.0 compatible (equivalent to OW R2xx)			_ B _____	•
	Power Options				
	Battery Holder Only - No Battery Included			_ 0 _____	•
d. Antennas	Battery Power - Batteries included			_ B _____	•
	24 VDC power			_ D _____	•
	Antenna Options				
	Integral Right-angle, vertical 4 dBi			_ R _____	•
e. Remote Antenna Cable	Remote Omnidirectional, 8 dBi			_ M _____	•
	Remote Directional, 14 dBi			_ D _____	•
	Remote Antenna Adapter only, Type N Connection			_ A _____	•
	Remote Antenna Cable				
f. Surge Diverter and Cable	None			_ 0 _____	•
	Type N Remote Cable, 1.0 m (required for connection to transmitter)			_ 1 _____	•
	Type N Remote Cable, 3.0 m (required for connection to transmitter)			_ 2 _____	•
	Type N Remote Cable, 10.0 m (required for connection to transmitter)			_ 3 _____	•
f. Surge Diverter and Cable	Lightning Surge Diverter and Remote Cable				
	None			_ 0 _____	•
	Surge Diverter and Type N Cable (1.0 m)			_ 1 _____	•
	Surge Diverter and Type N Cable (3.0 m)			_ 2 _____	•
Surge Diverter and Type N Cable (10.0 m)			_ 3 _____	•	

STFW8xx

TABLE V	CONFIGURATION SELECTIONS		Selection	Availability
a. Application Software	Diagnostics and Applications			28
	Standard Diagnostics		1 ___	•
	Standard Diagnostics plus Anti-Alias Filter		3 ___	•
b. Country	Destination Country			
	Canada		_ CA _	•
	European Union (RED compliant countries includes Australia)		_ EU _	•
c. General Configuration	USA and Puerto Rico		_ US _	•
	Factory Standard		___ S	•
	Custom Configuration (Unit Data Required from customer)		___ C	•

³ NAMUR Output Limits 3.8 - 20.5mAdc can be configured by the customer or select custom configuration Table Vc

TABLE VI	CALIBRATION & ACCURACY SELECTIONS			Selection	Availability
Accuracy and Calibration	Accuracy	Calibrated Range	Calibration Qty		
	Standard	Factory Std	Single Calibration	A	•
	Standard	Custom (Unit Data Required)	Single Calibration	B	•

TABLE VII	ACCESSORY SELECTIONS		Selection	Availability
a. Mounting Bracket	None (not required with flange mount unit)		0 ___	•
b. Customer Tag	No customer tag		_ 0 _	•
	One Wired Stainless Steel Tag (Up to 4 lines 26 char/line)		_ 1 _	•
	Two Wired Stainless Steel Tag (Up to 4 lines 26 char/line)		_ 2 _	•
c. Unassembled Conduit Plugs & Adapters	No Conduit Plugs or Adapters Required		__ A0	•
	1/2 NPT Male to 3/4 NPT Female 316 SS Certified Conduit Adapter		__ A2	n
	1/2 NPT 316 SS Certified Conduit Plug		__ A6	n
	M20 316 SS Certified Conduit Plug		__ A7	m
	Minifast [®] 4 pin (1/2 NPT)		__ A8	n
	Minifast [®] 4 pin (M20)		__ A9	m

TABLE VIII	OTHER Certifications & Options: (String in sequence comma delimited (XX, XX, XX,.....))	Selection	Availability
Certifications & Warranty	None - No additional options	00	•
	NACE MR0175; MR0103; ISO15156 (FC33338) Process wetted parts only	FG	•
	NACE MR0175; MR0103; ISO15156 (FC33339) Process wetted and non-wetted parts	F7	c
	EN10204 Type 3.1 Material Traceability (FC33341)	FX	•
	Certificate of Conformance (F3391)	F3	•
	Calibration Test Report & Certificate of Conformance (F3399)	F1	•
	Certificate of Origin (F0195)	F5	•
	Over-Pressure Leak Test Certificate (1.5X MAWP) (F3392)	TP	•
	Cert Clean for O ₂ or CL ₂ service per ASTM G93	OX	e
	PMI Certification ¹	PM	•
	Extended Warranty Additional 1 year	01	•
	Extended Warranty Additional 2 years	02	•
	Extended Warranty Additional 3 years	03	•
	Extended Warranty Additional 4 years	04	•
	Extended Warranty Additional 15 years	15	•

TABLE IX	Manufacturing Specials	Selection	Availability
Factory	Factory Identification	00000	•

MODEL RESTRICTIONS

Restriction Letter	Available Only with		Not Available with	
	Table	Selection(s)	Table	Selection(s)
c	Id	___N__		
e	Ib	_2_		
m	IVa	B, D, N_____		
n	IVa	A, C, M_____		
q	Ia	G_____		
s	Ia	E, X, F_____		
v	Ia	R,S_____		
w			Ia	R,S_____
			IIb	_5_
b	Select only one option from this group			

¹The PM option is available on all Smartline Wireless Pressure Transmitter process wetted parts such as process heads, flanges, bushings and vent plugs except plated carbon steel process heads and flanges. PM option information is also available on diaphragms except Gold plated and STGW and STAW in-line construction pressure transmitters.

FIELD INSTALLABLE REPLACEMENT PARTS

Description	Kit Number
1/2 NPT cocket plug (ZN plated CS)	50021832-501
1/2 NPT certified conduit plug (SS)	50021832-502
M20 conduit plug (ZN plated CS)	50000547-502
M20 certified conduit plug (SS)	50000547-501
Lightning surge diverter (order cable separately)	50018279-590
IS battery pack	50047517-501
24 VDC external power module	50136118-501
Integral right-angle, vertical 4 dBi, aluminum pure polyester	50030973-503
Integral right-angle, vertical 4 dBi, aluminum epoxy-polyester	50030973-504
Integral right-angle, vertical 4 dBi, stainless steel	50030973-505
Remote omnidirectional antenna, 8 dBi	50018414-501
Remote directional antenna, 14 dBi	50018415-501
Remote antenna adapter, Type N connection	50028364-501
Remote cable for antenna or accessories, Type N (1.0m)	50018278-501
Remote cable for antenna or accessories, Type N (3.0m)	50018278-503
Remote cable for antenna or accessories, Type N (10.0m)	50018278-510
Lithium thionyl chloride batteries (Qty 2)	50026010-501
Lithium thionyl chloride batteries (Qty 4)	50026010-502
Lithium thionyl chloride batteries (Qty 10)	50026010-503

PRODUCT MANUALS

Description	Part Number
SmartLine Wireless Transmitter User's Manual	34-SW-25-01

All product documentation is available at www.honeywellprocess.com.

Model Selection Guide for STFW700

Model Selection Guides are subject to change and are inserted into the specifications as guidance only.

**Model STFW700
Flange Mounted Liquid Level
Wireless Transmitter**

Model Selection Guide
34-SW-16-03 Issue 1

Instructions: Make selections from all Tables using column below the proper arrow. Asterisk indicates availability. Letter (a) refers to restrictions highlighted in the restrictions table. Tables delimited with dashes.

Key Number	I	II	III	IV	V	VI	VII	VIII	IX
STFW7	-	-	-	-	-	-	-	-	00000

KEY NUMBER	URL	LRL	Max Span	Min Span	Units	Selection	Availability
Measurement Range Std	400 (1000)	-400 (-1000)	400 (1000)	4 (10)	" H ₂ O (mbar)	STFW724	↓

TABLE I	Materials of Construction	Design	Ref. Head	Vent Drain Valve on Ref. Head ²	Barrier Diaphragm. (wetted)	Diaphragm. Plate (wetted)	Extension (wetted)			
Meter Body & Flange Design	a. Process Wetted Heads & Diaphragm Materials	Flush	316 SS ⁵	316 SS	316L SS Hast C ³ Hast C ³	316L SS 316L SS Hast C ³	N/A	E	•	
		Extended	316 SS ⁵	316 SS	316L SS Hast C ³	316L SS	316L SS	X	•	
	b. Fill Fluid (Meter Body & Flange)	Silicone Oil 200							_ 1	•
		Fluorinated Oil CTFE							_ 2	•
		NEOBEE® M-20							_ 4	•
	c. Process Connection	Reference Head				Flange				
		1/4 NPT 1/2 NPT Adapter - material matches head material and head bolt material ¹¹				High Pressure Side			_ A	•
	d. Bolts for Process Heads	Carbon Steel Bolts							_ C	•
		316 SS Bolts							_ S	•
		A286 SS (NACE) Bolts							_ N	•
	e. Vent/Drain Type/Location	Ref. Head Type	Vent Type	Location	Vent Material					
		Single Ended	None	None	None			_ 1	•	
		Single Ended	Std	Side	Matches Head Material ¹¹			_ 2	•	
		Single Ended	Ctr	Side	Stainless Steel Only			_ 3	•	
		Dual Ended	Std	End	Matches Head Material ¹¹			_ 4	•	
Dual Ended		Cntr	End	Stainless Steel Only			_ 5	•		
Dual Ended	Vent/Plug	Side/End	Matches Head Material ¹¹			_ 6	•			
f. Gasket	Teflon® or PTFE (Glass Filled)							_ A	•	

¹ Carbon Steel heads are zinc-plated and not recommended for water service due to hydrogen migration. For that service, use the 316 stainless steel Wetted Reference Head.
² Vent/Drains are Teflon or PTFE coated for lubricity.
³ Hastelloy® C-276 or UNS N10276
⁵ Supplied as 316 SS or as Grade CF8M, the casting equivalent of 316 SS.
⁶ Supplied as indicated or as Grade CW12MW, the casting equivalent of Hastelloy® C-276
¹¹ Except Carbon Steel Heads shall use 316SS Vent/Drain, Plugs & Adapters when required

TABLE II		Flange Material	Threaded Nut Ring Material	STFW724	Availability		
Flange Assembly	a. Flange (ANSI Flanges have 125-500 AARH Surface Finish)	3" ANSI Class 150 3" ANSI Class 300 DN80-PN40 DIN 4" ANSI Class 150 4" ANSI Class 300 DN100-PN40 DIN 2" ANSI Class 150 2" ANSI Class 300 DN50-PN40 DIN	304 SS (non-wetted)	304 SS (non-wetted)	A __	•	
					B __	•	
					C __	•	
					D __	•	
					E __	•	
					F __	•	
					Q __	•	
					U __	•	
					V __	•	
					b. Gasket Ring (wetted)	3" ANSI Class 150 3" ANSI Class 300 DN80-PN40 DIN 4" ANSI Class 150 4" ANSI Class 300 DN100-PN40 DIN 2" ANSI Class 150 2" ANSI Class 300 DN50-PN40 DIN	316 SS (non-wetted)
J __	•						
K __	•						
L __	•						
M __	•						
N __	•						
W __	•						
X __	•						
Z __	•						
c. Extension (wetted)	Flush Design	316L SS Hastelloy® C ³	316L SS	_ 1 _			
				_ 2 _	s		
				_ 5 _	v		
c. Extension (wetted)	Flush	Diameter	Length	_ _ F	w		
				1.87 Inches (for 2", 3" or 4" spud) ¹³	2 inches	_ _ C	v
					4 inches	_ _ D	v
					6 inches	_ _ E	v

³ Hastelloy® C-276 or UNS N10276

¹³ For part numbers and pricing information on Tank Spuds refer to page ST-91 (Supplementary Accessories & Kits).

TABLE III		Agency Approvals (see data sheet for Approval Code Details)	
Approvals	No Approvals Required	0	•
	ATEX and IEC Ex Explosion proof, Intrinsically Safe, Non-incendive & Dustproof	A	•
	c CSA US Explosion proof, Intrinsically Safe, Non-incendive, & Dustproof	B	•
	FM Intrinsically Safe, Non-incendive and Dustproof	H	•

TABLE IV		HOUSING and ELECTRONICS SELECTIONS			
		Material	Connection	Paint Color	
a. Electronic Housing Material & Connection Type	Epoxy Polyester Hybrid Coated Aluminum	1/2 NPT	Standard (Blue / Gray)	C _ _ _ _	•
	Epoxy Polyester Hybrid Coated Aluminum	M20	Standard (Blue / Gray)	D _ _ _ _	•
	316 Stainless Steel (Grade CF8M)	1/2 NPT	None	M _ _ _ _	•
	316 Stainless Steel (Grade CF8M)	M20	None	N _ _ _ _	•
b. Output/ Protocol	Wireless Protocol				
	ISA100 Wireless 2.0 compatible (equivalent OW R300 or newer)			_ A _ _ _	•
c. Power	Power Options				
	Battery Holder Only - No Battery Included			_ _ 0 _ _	•
	Battery Power - Batteries included			_ _ B _ _	•
d. Antennas	Antenna Options				
	Integral Right-angle, vertical 4 dBi			_ _ _ R _	•
	Remote Omnidirectional, 8 dBi			_ _ _ M _	•
	Remote Directional, 14 dBi			_ _ _ D _	•
e. Remote Antenna Cable	Remote Antenna Cable				
	None			_ _ _ _ 0 _	•
	Type N Remote Cable, 1.0 m (required for connection to transmitter)			_ _ _ _ 1 _	•
	Type N Remote Cable, 3.0 m (required for connection to transmitter)			_ _ _ _ 2 _	•
	Type N Remote Cable, 10.0 m (required for connection to transmitter)			_ _ _ _ 3 _	•
f. Surge Diverter and Cable	Lightning Surge Diverter and Remote Cable				
	None			_ _ _ _ 0	•
	Surge Diverter and Type N Cable (1.0 m)			_ _ _ _ 1	•
	Surge Diverter and Type N Cable (3.0 m)			_ _ _ _ 2	•
	Surge Diverter and Type N Cable (10.0 m)			_ _ _ _ 3	•

STFW724 Availability

TABLE V		CONFIGURATION SELECTIONS	
a. Application Software	Diagnostics and Applications		
	Standard Diagnostics	1 ___	•
	Standard Diagnostics plus Anti-Alias Filter	3 ___	•
b. Country	Destination Country		
	Canada	_ CA _	•
	European Union	_ EU _	•
	USA and Puerto Rico	_ US _	•
c. General Configuration	Factory Standard	___ S	•
	Custom Configuration (Unit Data Required from customer)	___ C	•

TABLE VI		CALIBRATION & ACCURACY SELECTIONS		
Accuracy and Calibration	Accuracy	Calibrated Range	Calibration Qty	
	Standard	Factory Std	Single Calibration	A •
	Standard	Custom (Unit Data Required)	Single Calibration	B •

TABLE VII		ACCESSORY SELECTIONS	
a. Mounting Bracket	None (not required with flange mount unit)	0 ___	•
b. Customer Tag	No customer tag	_ 0 _	•
	One Wired Stainless Steel Tag (Up to 4 lines 26 char/line)	_ 1 _	•
	Two Wired Stainless Steel Tag (Up to 4 lines 26 char/line)	_ 2 _	•
c. Unassembled Conduit Plugs & Adapters	No Conduit Plugs or Adapters Required	__ A0	•
	1/2 NPT Male to 3/4 NPT Female 316 SS Certified Conduit Adapter	__ A2	n
	1/2 NPT 316 SS Certified Conduit Plug	__ A6	n
	M20 316 SS Certified Conduit Plug	__ A7	m
	Minifast® 4 pin (1/2 NPT)	__ A8	n
	Minifast® 4 pin (M20)	__ A9	m

TABLE VIII		OTHER Certifications & Options: (String in sequence comma delimited (XX, XX, XX,...))		
Certifications & Warranty	None - No additional options	00	•	
	NACE MR0175; MR0103; ISO15156 (FC33338) Process wetted parts only	FG	•	b
	NACE MR0175; MR0103; ISO15156 (FC33339) Process wetted and non-wetted parts	F7	•	c
	EN10204 Type 3.1 Material Traceability (FC33341)	FX	•	
	Certificate of Conformance (F3391)	F3	•	b
	Calibration Test Report & Certificate of Conformance (F3399)	F1	•	
	Certificate of Origin (F0195)	F5	•	
	Over-Pressure Leak Test Certificate (1.5X MAWP) (F3392)	TP	•	
	Cert Clean for O ₂ or CL ₂ service per ASTM G93	OX	•	e
	PMI Certification	PM	•	
	Extended Warranty Additional 1 year	01	•	
	Extended Warranty Additional 2 years	02	•	b
	Extended Warranty Additional 3 years	03	•	
Extended Warranty Additional 4 years	04	•		

TABLE IX		Manufacturing Specials	
Factory	Factory Identification	00000	•

MODEL RESTRICTIONS

Restriction Letter	Available Only with		Not Available with	
	Table	Selection(s)	Table	Selection(s)
c	ld	___N__		
e	lb	_2_		
m	IVa	B, D, N _____		
n	IVa	A, C, M _____		
s	la	E, X, F _____		
v	la	R,S _____		
w			la	R,S _____
			llb	_5_
b	Select only one option from this group			

¹The PM option is available on all Smartline Wireless Pressure Transmitter process wetted parts such as process heads, flanges, bushings and vent plugs except plated carbon steel process heads and flanges. PM option information is also available on diaphragms except STGW and STAW in-line construction pressure transmitters.

FIELD INSTALLABLE REPLACEMENT PARTS

Description	Kit Number
1/2 NPT cocket plug (ZN plated CS)	50021832-501
1/2 NPT certified conduit plug (SS)	50021832-502
M20 conduit plug (ZN plated CS)	50000547-502
M20 certified conduit plug (SS)	50000547-501
Lightning surge diverter (order cable separately)	50018279-590
IS battery pack	50047517-501
24 VDC external power module	50136118-501
Integral right-angle, vertical 4 dBi, aluminum pure polyester	50030973-503
Integral right-angle, vertical 4 dBi, aluminum epoxy-polyester	50030973-504
Integral right-angle, vertical 4 dBi, stainless steel	50030973-505
Remote omnidirectional antenna, 8 dBi	50018414-501
Remote directional antenna, 14 dBi	50018415-501
Remote antenna adapter, Type N connection	50028364-501
Remote cable for antenna or accessories, Type N (1.0m)	50018278-501
Remote cable for antenna or accessories, Type N (3.0m)	50018278-503
Remote cable for antenna or accessories, Type N (10.0m)	50018278-510
Lithium thionyl chloride batteries (Qty 2)	50026010-501
Lithium thionyl chloride batteries (Qty 4)	50026010-502
Lithium thionyl chloride batteries (Qty 10)	50026010-503

PRODUCT MANUALS

Description	Part Number
SmartLine Wireless Transmitter User's Manual	34-SW-25-01

All product documentation is available at www.honeywellprocess.com.

Sales and Service

For application assistance, current specifications, ordering, pricing, and name of the nearest Authorized Distributor, contact one of the offices below.

ASIA PACIFIC

Honeywell Process Solutions,
Phone: + 800 12026455 or
+44 (0) 1202645583
(TAC) hfs-tac-support@honeywell.com

Australia

Honeywell Limited
Phone: +(61) 7-3846 1255
FAX: +(61) 7-3840 6481
Toll Free 1300-36-39-36
Toll Free Fax:
1300-36-04-70

China – PRC - Shanghai

Honeywell China Inc.
Phone: (86-21) 5257-4568
Fax: (86-21) 6237-2826

Singapore

Honeywell Pte Ltd.
Phone: +(65) 6580 3278
Fax: +(65) 6445-3033

South Korea

Honeywell Korea Co Ltd
Phone: +(822) 799 6114
Fax: +(822) 792 9015

EMEA

Honeywell Process Solutions,
Phone: + 800 12026455 or
+44 (0) 1202645583

Email: (Sales)

FP-Sales-Apps@Honeywell.com

or

(TAC)

hfs-tac-support@honeywell.com

AMERICAS

Honeywell Process Solutions,
Phone: (TAC) (800) 423-9883
or (215) 641-3610
(Sales) 1-800-343-0228

Email: (Sales)

FP-Sales-Apps@Honeywell.com

or

(TAC)

hfs-tac-support@honeywell.com

For more information

To learn more about SmartLine Transmitters,
visit www.honeywellprocess.com
Or contact your Honeywell Account Manager

Process Solutions

Honeywell
1250 W Sam Houston Pkwy S
Houston, USA, TX 77042

Honeywell Control Systems Ltd
Honeywell House, Skimped Hill Lane
Bracknell, England, RG12 1EB

Shanghai City Centre, 100 Jungi Road
Shanghai, China 20061

www.honeywellprocess.com



34-SW-03-04
October 2018

©2018 Honeywell International Inc.